



Real Estate
Developments



RE/MAX
COMMERCIAL
RE/MAX EXCELLENCE
COMMERCIAL DIVISION

COMING SOON

The BRICK[®]



EVER on Baseline

180 Baseline Road, Sherwood Park

**Future
Retail &
Professional
2027 est.**

EVER on Baseline

180 Baseline Road, Sherwood Park

High Exposure Retail Complex Anchored by The Brick

EVER on Baseline is a proposed development on one of Sherwood Park's main roadways. The project will be a welcome addition to the already established trade area at the intersection of Baseline Road and Broadmoor Boulevard. This corner site provides exceptional exposure and is less than a minute away from Anthony Henday Drive.

- Corner exposure and access on both Baseline Road and Broadmoor Boulevard
- Opportunities available for drive-thrus, retail, medical and professional users
- Turn-key options available for businesses
- Site is in an established commercial trade area adjacent to neighbourhoods and commercial retail centres
- Multiple access points
- Minutes away from Anthony Henday Drive and Yellowhead Trail
- 10 minutes from Edmonton via Baseline Road



Demographics (2019)



POPULATION

1 KM	3 KM	5 KM
2,560	31,685	72,221



HOUSEHOLDS

1KM	3KM	5KM
1,039	12,391	27,038



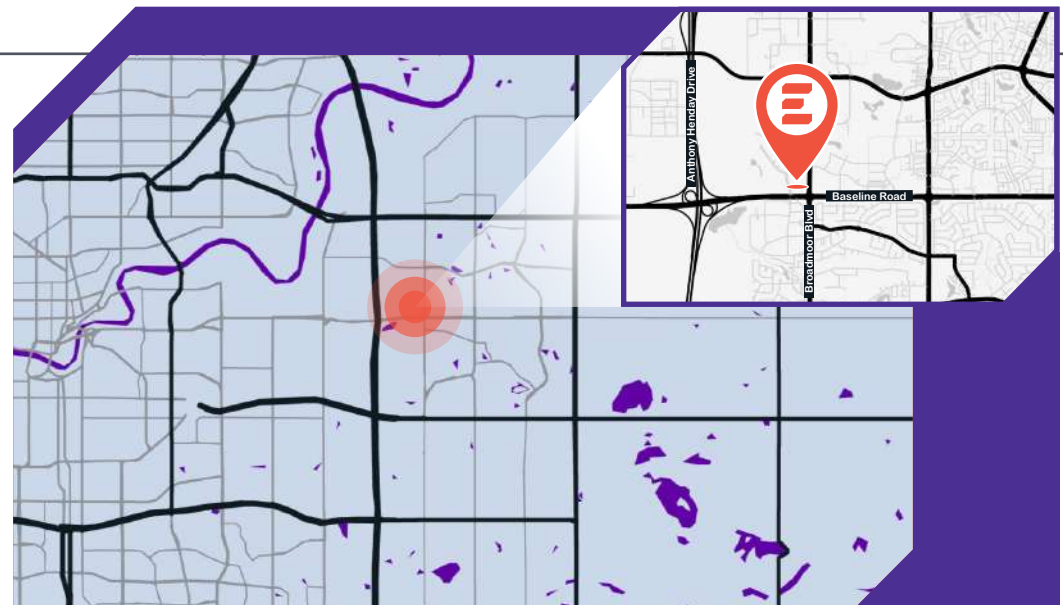
AVERAGE INCOME

1 KM	3 KM	5 KM
\$116,005	\$133,585	\$160,054



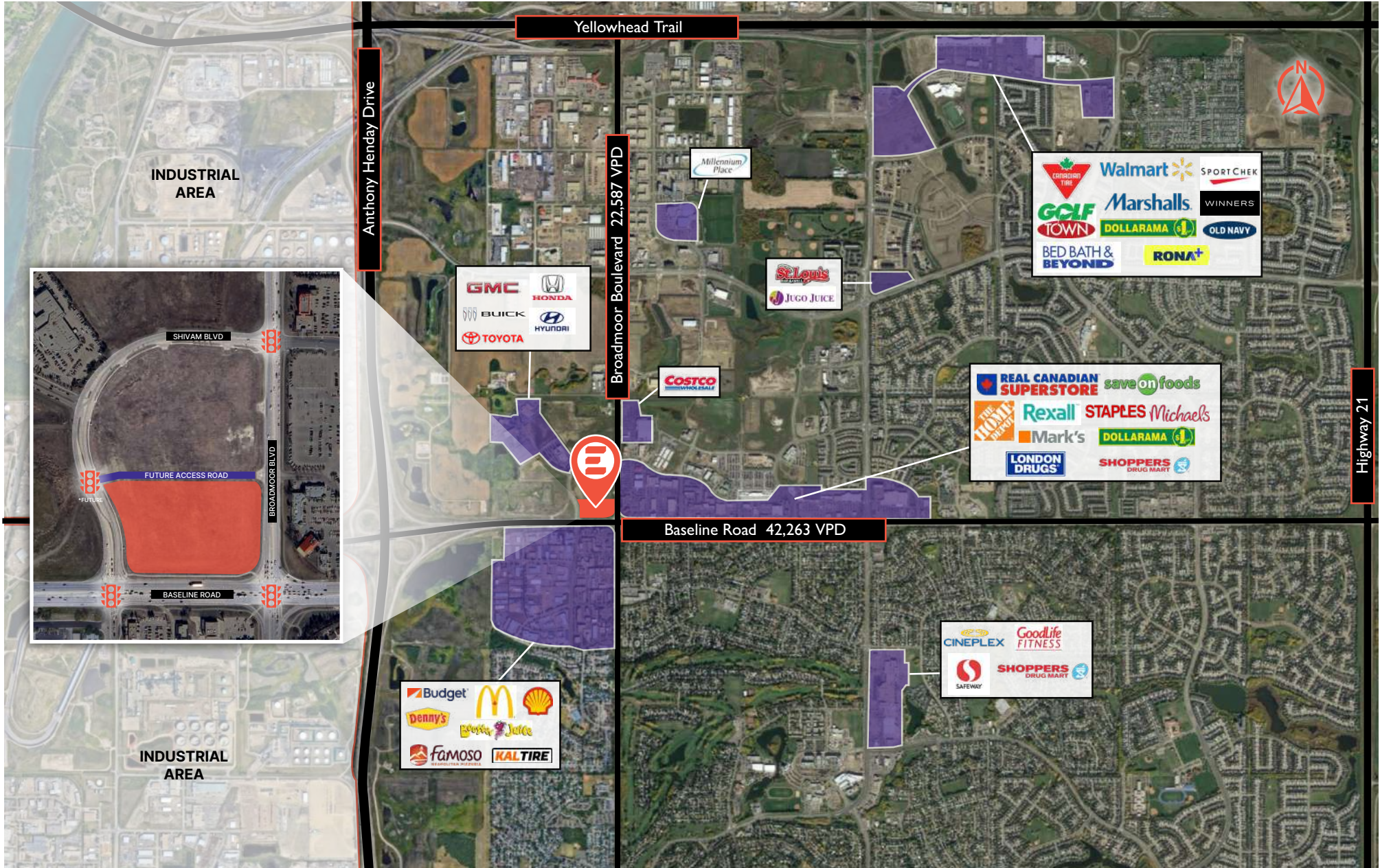
VEHICLES PER DAY

BASILINE ROAD	BROADMOOR BLVD	SHIVAM BLVD
42,263 VPD	22,589 VPD	7,779 VPD



Please note this development is currently in the design phase and plans are subject to change. Site plan and renderings are for discussion purposes only. Renderings may not reflect most current iteration of site plan presented.

Future
Retail &
Professional
2027 est.



Future Retail & Professional 2027 est.



Real Estate Developments



FOR LEASE PENDING FULLY RESERVED

Building 1 - Big Box Store

100 THE BRICK 34,347 SF ±

Building 2 - Two-Storey Professional Building

201 - 209 PENDING 5,300 SF ±

211-213 2,572 SF ±

221 A 5,988 SF ±

221 B 1,562 SF ±

Building 3 - Retail and Professional

301-309 PENDING 6,712 SF ±

Building 4 - Standalone Drive-Thru

400 PENDING 2,299 SF ±

Building 5 - Standalone Drive-Thru

500 PENDING 1,879 SF ±

Building 6 - Standalone Drive-Thru

600 PENDING 3,089 SF ±

Building 7 - Standalone Drive-Thru

700 PENDING 4,994 SF ±

Building 8 - Retail and Restaurant

801 784 SF ± 809 1,061 SF ±

803 990 SF ± 811 1,061 SF ±

805 1,056 SF ± 813 1,033 SF ±

807 1,054 SF ±

Building 9 - Retail and Restaurant

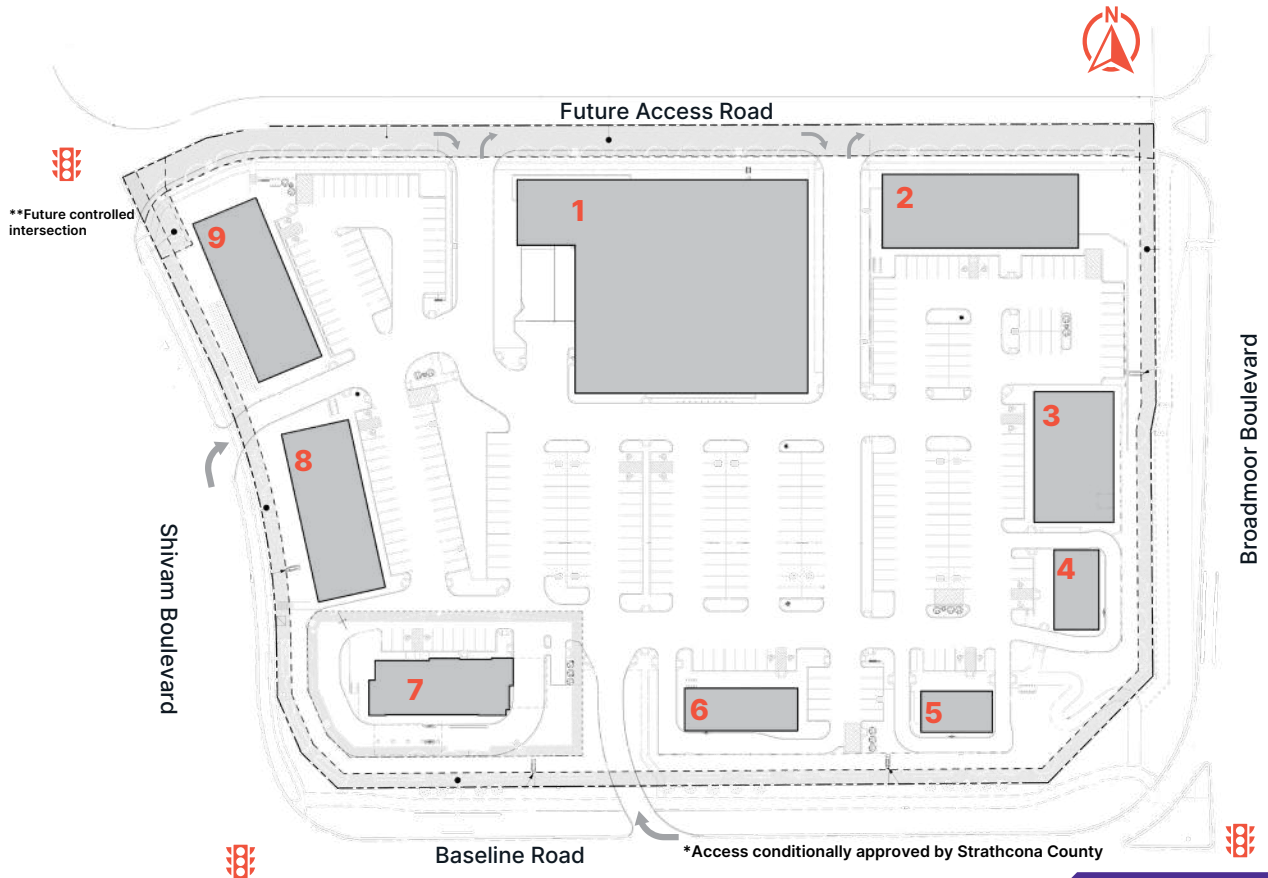
901 1,031 SF ± 911 1,055 SF ±

903 1,063 SF ± 913 1,054 SF ±

905 1,066 SF ± 915 782 SF ±

907 1,056 SF ±

ZONING C2 - Arterial Commercial	PARKING 366 +/- Paved Surface Stalls (est.)
LEASE RATE Market	DEVELOPMENT SIZE 87,925 SF +/-
	LAND AREA 8.83 acres +/-



Please note this development is currently in the design phase and plans are subject to change. Site plan and renderings are for discussion purposes only.

*Right-in access from Baseline Road has been conditionally approved by Strathcona County.

**Future controlled intersection, to be complete following construction of future access road north of the property.

EB 26.01.23

Sign Up
Newsletter



Rahim Rahemtullah

Partner/VP Sales

E: rahim.r@everred.ca

D: 587.635.4202

C: 780.695.1200



Alexandria Wiemer

Sales Manager

Associate, RE/MAX Excellence

E: alex.w@everred.ca

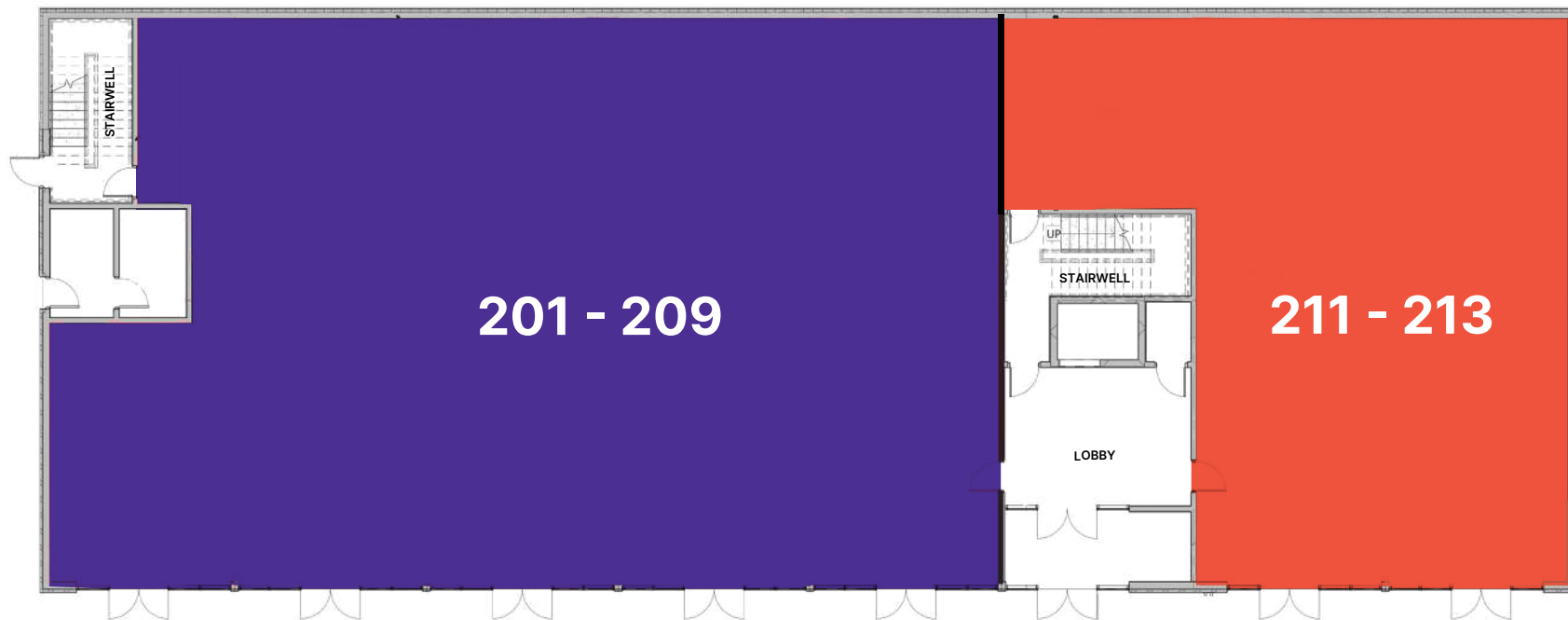
O: 587.635.4200 TF: 1.888.385.EVER

EVER Real Estate Developments Ltd. Suite 502, 4730 Gateway Blvd NW Edmonton AB T6H 4P1

Future
Retail &
Professional
2027 est.

BUILDING 2 - MAINFLOOR PROFESSIONAL BUILDING

FOR LEASE PENDING LEASED



Front

BUILDING 2 - MAIN

Medical Professional

201-209 PENDING 5,300 SF ±

211 - 213 2,572 SF ±

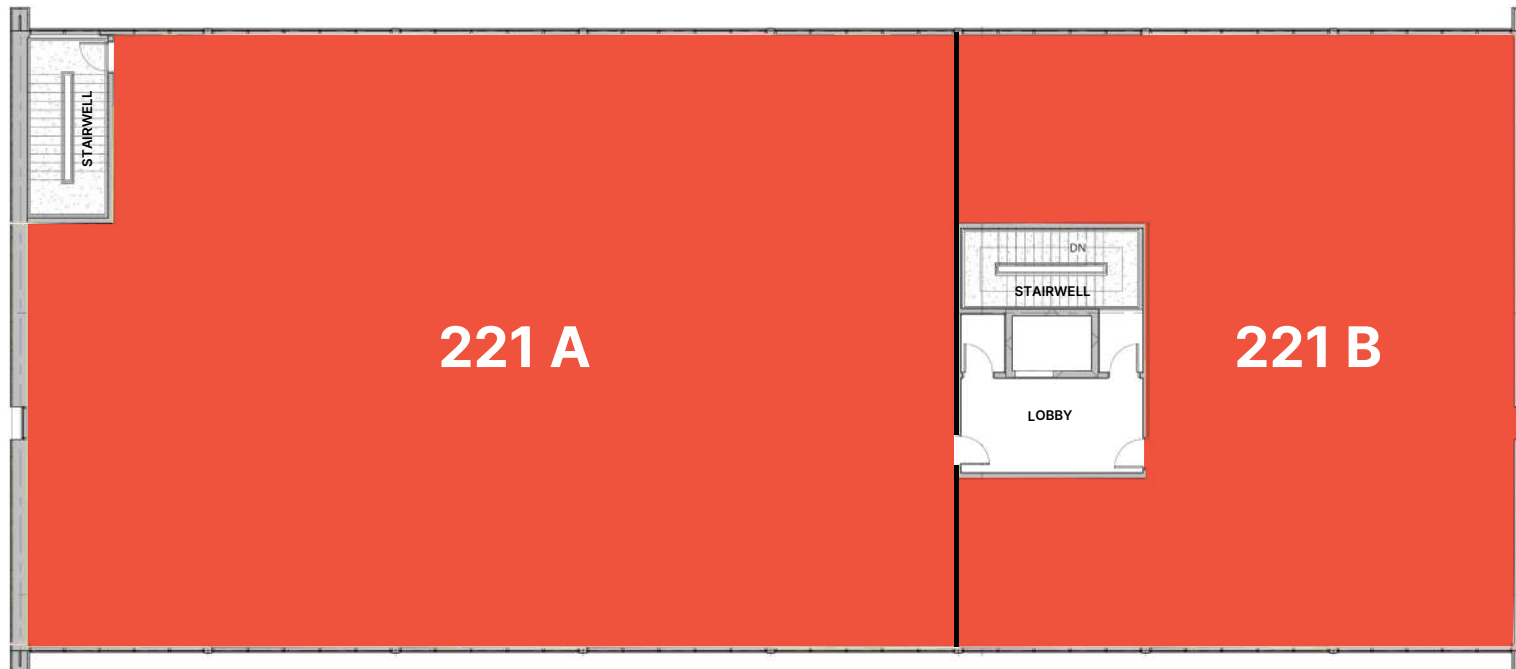
HIGHLIGHTS

- Supported by adjacent professional users
- Frontage on Broadmoor Boulevard
- Pylon signs with exposure to Broadmoor Boulevard and Baseline Road

Future
Retail &
Professional
2027 est.

BUILDING 2 - SECOND STOREY PROFESSIONAL BUILDING

FOR LEASE PENDING LEASED



Front

BUILDING 2 - SECOND STOREY

Professional

221 A	5,988 SF ±
221 B	3,153 SF ±

HIGHLIGHTS

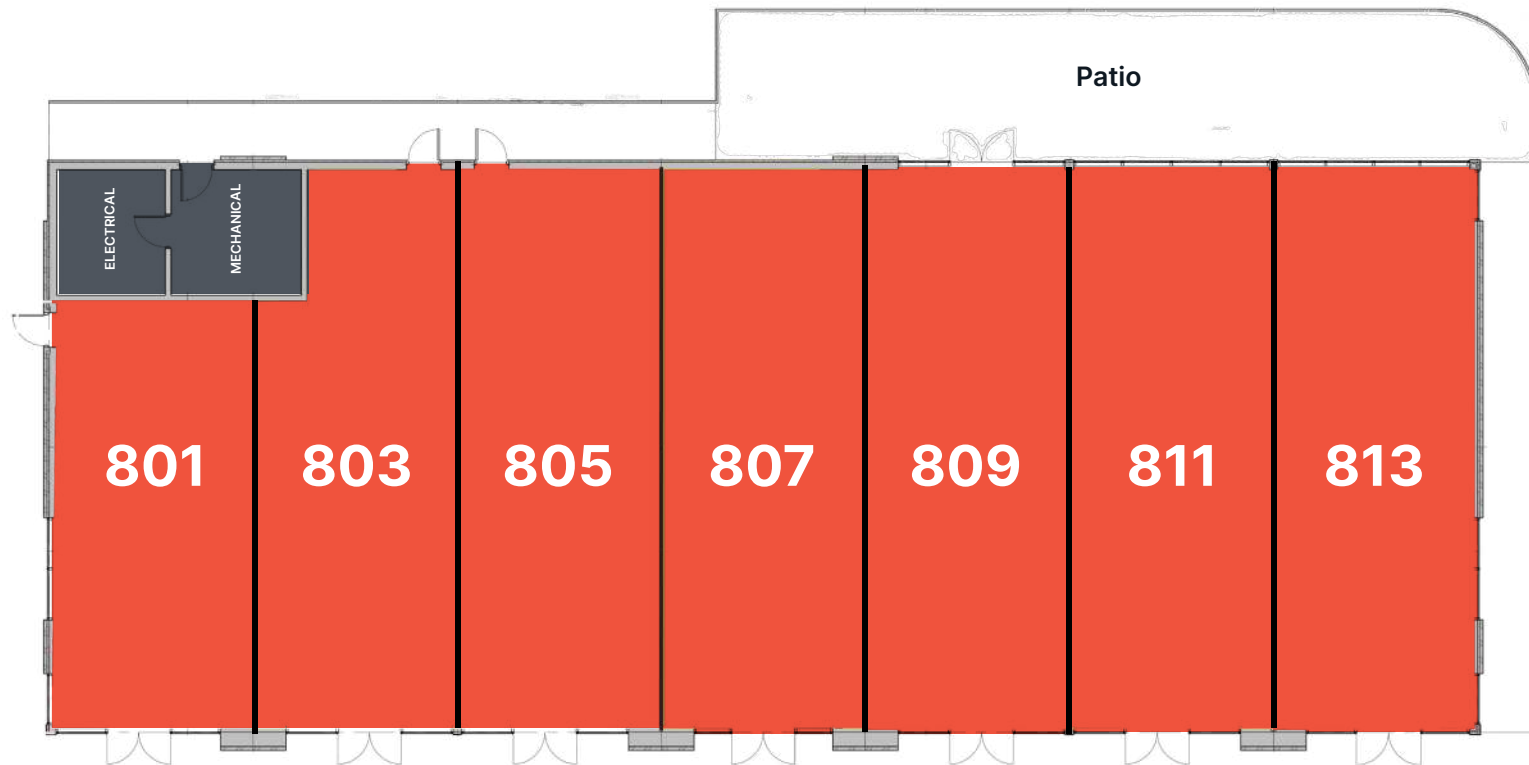
- Supported by adjacent professional users
- Frontage on Broadmoor Boulevard
- Pylon signs with exposure to Broadmoor Boulevard and Baseline Road

Units sizes are subject to change and will be confirmed upon completion of survey.
Demisable and contiguous options available.

Future
Retail &
Professional
2027 est.

BUILDING 8 - RETAIL & RESTAURANT

■ FOR LEASE
 ■ PENDING
 ■ LEASED



Front

BUILDING 8			
Retail/Restaurant			
801	784 SF ±	809	1,061 SF ±
803	990 SF ±	811	1,061 SF ±
805	1,056 SF ±	813	1,033 SF ±
807	1,054 SF ±		

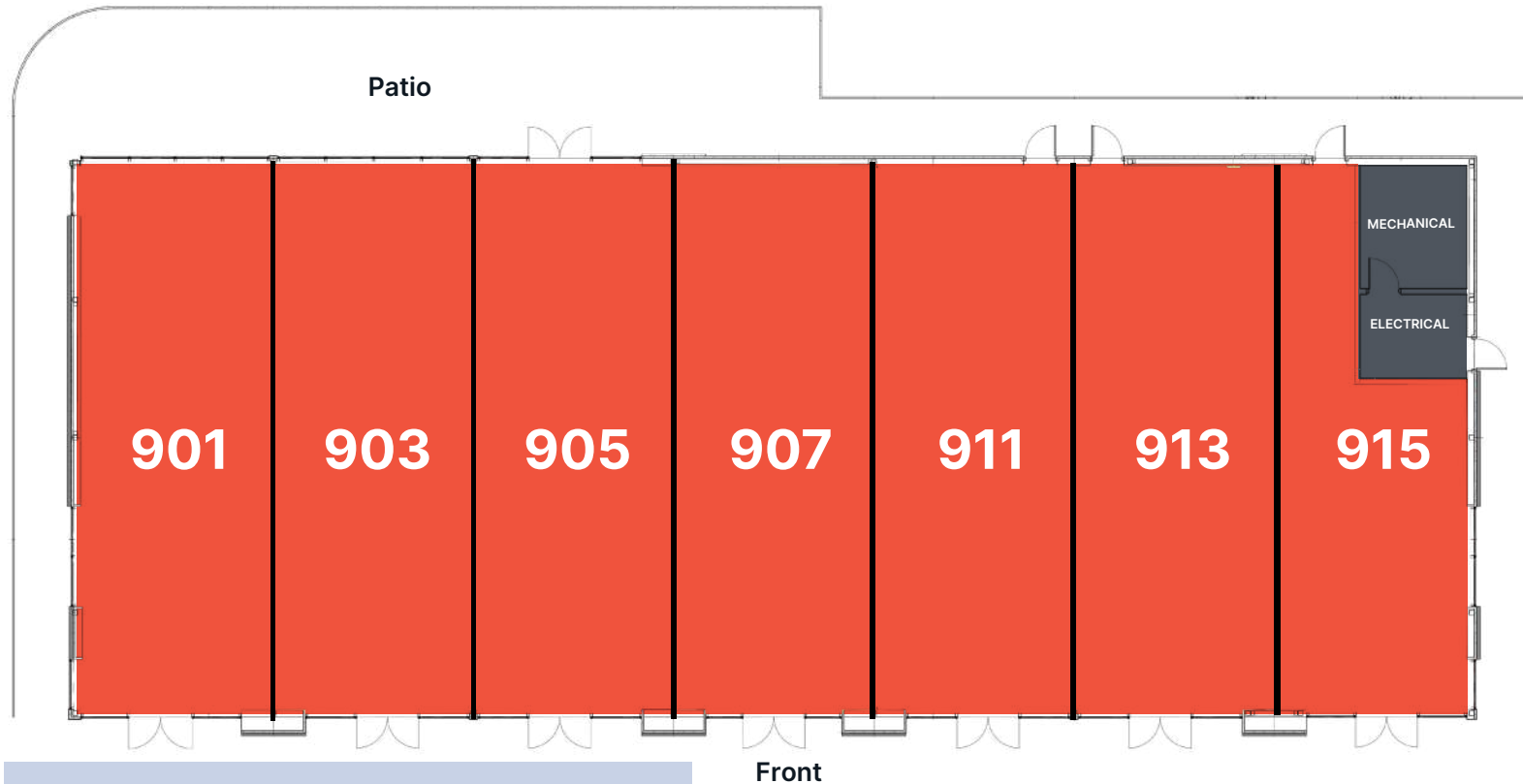
- ### HIGHLIGHTS
- Visibility from Baseline Road and Shivam Boulevard
 - Patio space available for restaurant users
 - Pylon signs with exposure to Broadmoor Boulevard and Baseline Road

Units sizes are subject to change and will be confirmed upon completion of survey. Demisable and contiguous options available.

**Future
Retail &
Professional
2027 est.**

BUILDING 9 - RETAIL & RESTAURANT

■ FOR LEASE
 ■ PENDING
 ■ LEASED



BUILDING 9			
<i>Retail/Restaurant</i>			
901	1,031 SF ±	911	1,056 SF ±
903	1,063 SF ±	913	1,054 SF ±
905	1,066 SF ±	915	782 SF ±
907	1,056 SF ±		

Front

- HIGHLIGHTS**
- Visibility from Baseline Road and Shivam Boulevard
 - Patio space available for restaurant users
 - Pylon signs with exposure to Broadmoor Boulevard and Baseline Road

Units sizes are subject to change and will be confirmed upon completion of survey.
Contiguous options available.