

FOR SALE

\$5,000,000

REDEVELOPMENT OPPORTUNITY

7550 Ellerslie Road, Edmonton, Alberta

Here is an exceptional 2.07-acre redevelopment opportunity along Main Ellerslie Road, one of Edmonton's fastest-growing corridors.

This strategically located property offers multi-side access and excellent exposure, making it ideal for Mixed-Use, Commercial, or Multi-Family development.

The site currently features a well-maintained 3,696 sq. ft. residence, providing immediate holding income while planning future redevelopment. Recent city service line upgrades enhance the long-term value, and the expansive lot offers flexibility for large-scale projects.

Boasting proximity to residential communities, retail hubs, and transit routes, this property is positioned to capitalize on Edmonton's south corridor growth. Its combination of size, location, and redevelopment potential makes it a rare opportunity for developers and investors seeking a high-value, future-oriented asset.



[View On Street](#)



[View On Maps](#)



MANISH PADANIA, Associate

(780) 554 8210

manish.padania@commercialyeg.ca

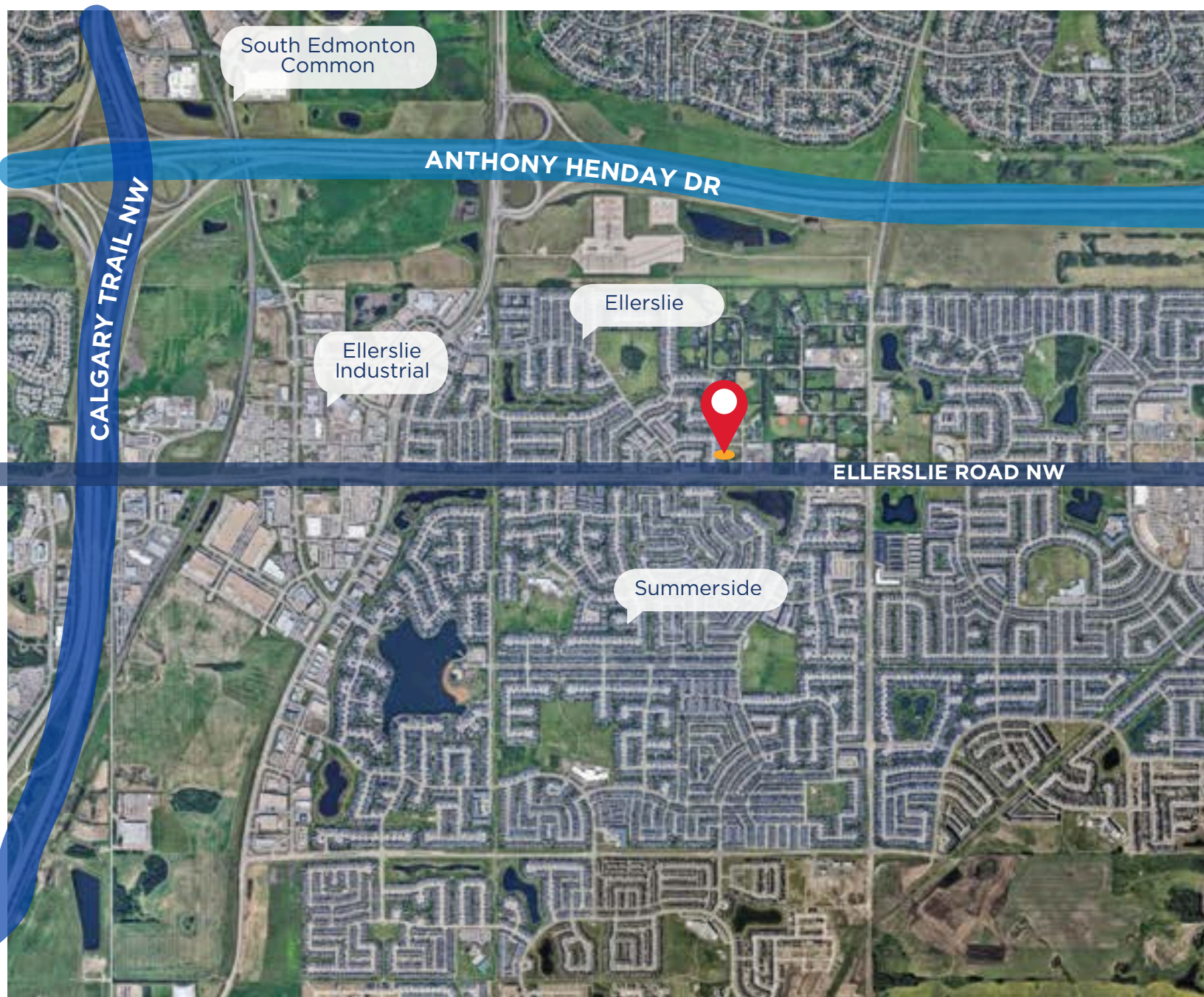
RAKESH PATEL, Associate

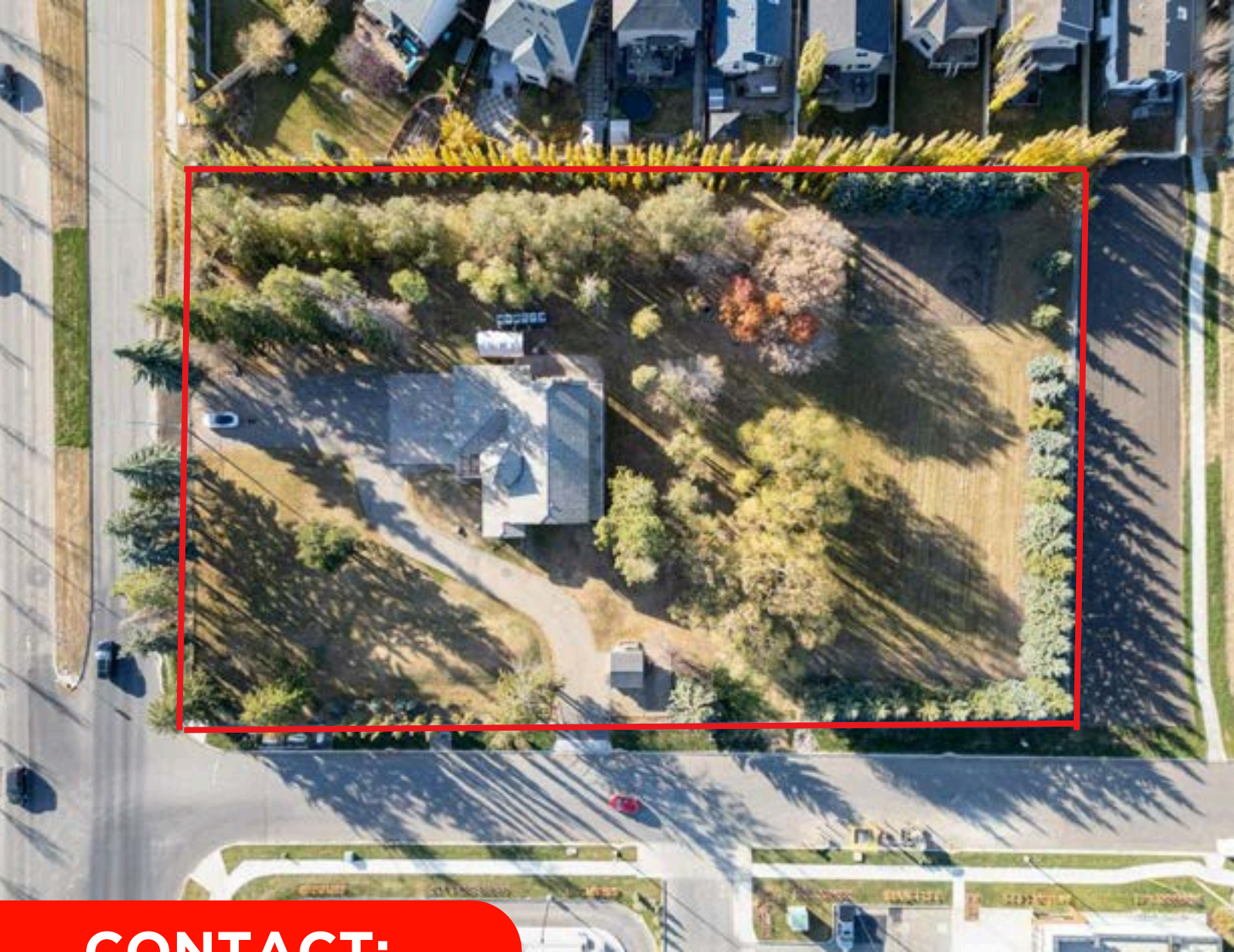
(780) 221 0555

rakesh@rakeshpatel.ca

PROPERTY DETAILS

Address	7550 Ellerslie Road
Size	± 2.07 Acres
Zoning	Rural Residential Zone
Residence	± 3,700 SF Single Family Detached
Year Built	1979
Asking Price	\$5,000,000







CONTACT:

MANISH PADANIA


Associate

 (780) 554 8210

 manish.padania@commercialyeg.ca

RAKESH PATEL

Associate

 (780) 221 0555

 rakesh@rakeshpatel.ca

